

TIER[®]

Natural Stone Supplies

GL SHARPE & SONS LTD
EST 1978

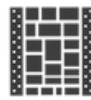


PANEL SYSTEM

ASSOCIATED PRODUCTS

INSTALLATION

Natural Stone **Made Simple**



Natural Stone Supplies

GL SHARPE & SONS LTD
EST 1978

CONTENTS

 TIER® PANEL SYSTEM:

■ NOVA

 TIER® ASSOCIATED PRODUCTS

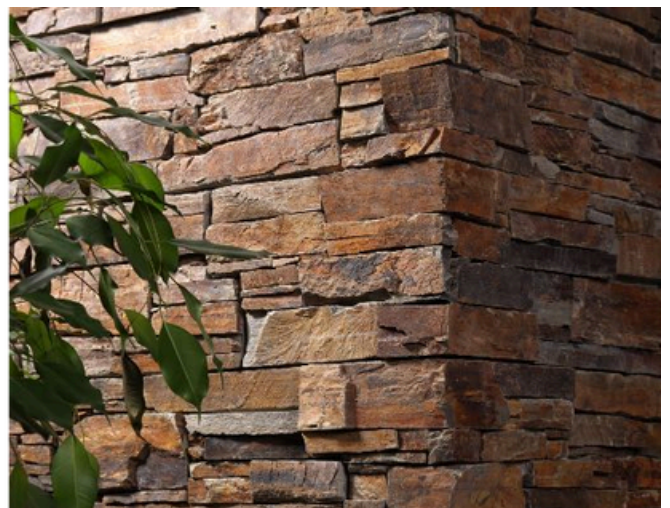
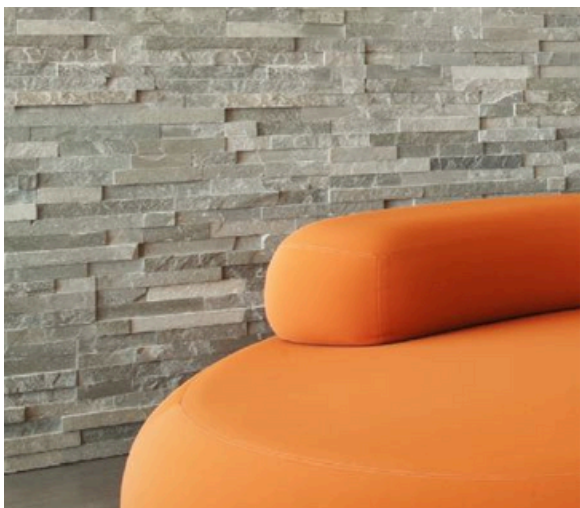
 INSTALLATION

Photographs within this brochure are intended as a guide to the general character, substance and colour of the materials. However, as these are natural products, there will always be some variation.

WHAT IS TIER®?

Tier is areal stone panelling system specifically designed to create a distinctive, natural stone finish wherever it is used.

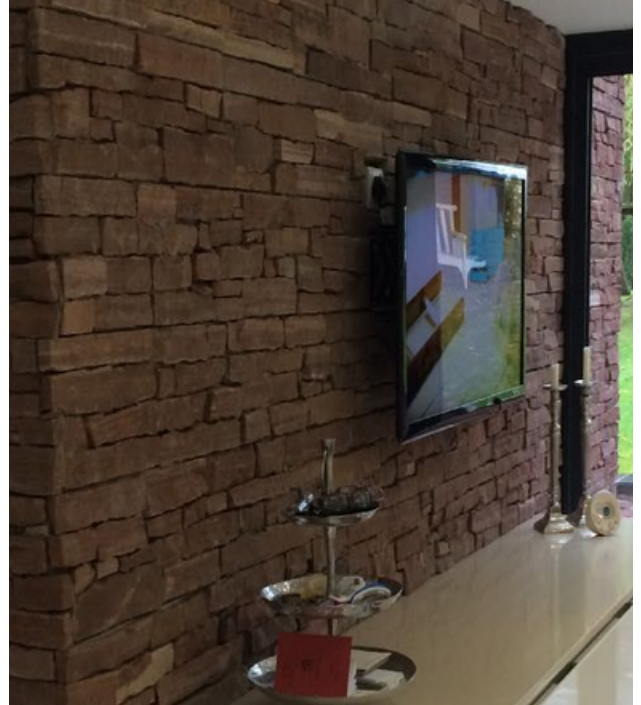
The panels rise in interlocking 'tiers', fitting seamlessly together, eliminating the need for specialist labour and making Tier a quick and easy system to use. The product is made from natural stone which is ideal for interior and exterior applications, and has been developed over years of experience. TIER® Systems are designed to combine the timeless beauty and durability of real stone with the ease of installation attained when using thin stone veneers and panels. To achieve this we use handpicked stones for each product, which are then dressed by our expert stone masons before being placed into the moulds. TIER® Systems are recognized for their quality and natural beauty. Using natural limestone, slate, quartz, granite, basalt and sandstone our masons adhere to strict guidelines to create products with subtle colour blends, but maintain traditional masonry methods which produce a consistent and authentic appearance. All our products have to pass stringent quality control procedures as well as meeting colour variance guidelines. These standards ensure a high quality product and result in a stunning finish on any application. We continually develop natural stone solutions for the walling sector using traditional and innovative methods to deliver new products and colours. We also pride ourselves on our professional and personal customer service. This enables us to service a broad range of customers with traditional and contemporary designs, and solutions for both large and small building projects.



WHY USE TIER®?

Authentic

As TIER® is made from natural stone, it bears all the form and character of a dry-stone wall. The simple yet clever, 'Z' formation of Tier Panel System allows each section to interlock seamlessly together producing all the charm and elegance of a natural stone surface.



Versatile

The applications for Tier are endless. Its simple installation means it can be incorporated into both commercial and residential environments, adding beauty to either an entire structure or a small feature.



Quality

Part of what makes TIER® unique is that it has been designed and developed by a professional stone mason. Only the highest quality natural stones are used during production. Each stone is carefully selected and dressed before use, so no two panels are the same. Quality raw materials and attention to detail are just some of the reasons TIER® stone panels create such a unique, timeless and elegant finish.

Simple

This panel system has been designed to achieve the look of a stone wall without the need for a qualified stonemason. No specialist skills are required to install Tier, which is why it is popular with contractors and developers alike.

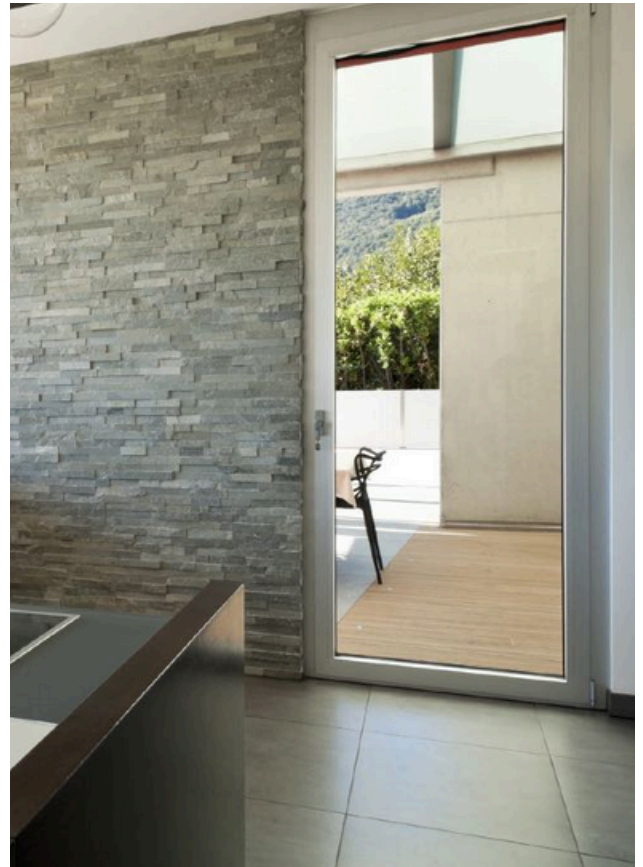
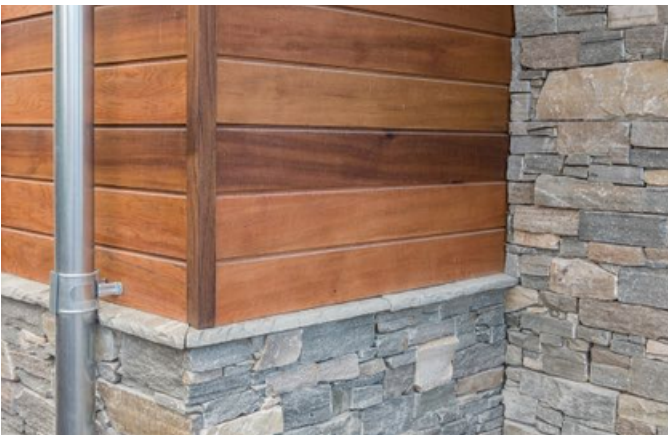


Economical

As well as reduced labour costs, Tier has the advantage of producing less waste during construction. Whilst traditional stone walling can have up to 25% wastage, Tier has virtually none.

Efficient

The modular design reduces the time taken to build stone walling. With TIER®, it is possible to install up to 30m² per day. This compares with 3m² for Random Rubble Walling.

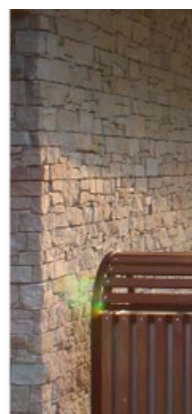
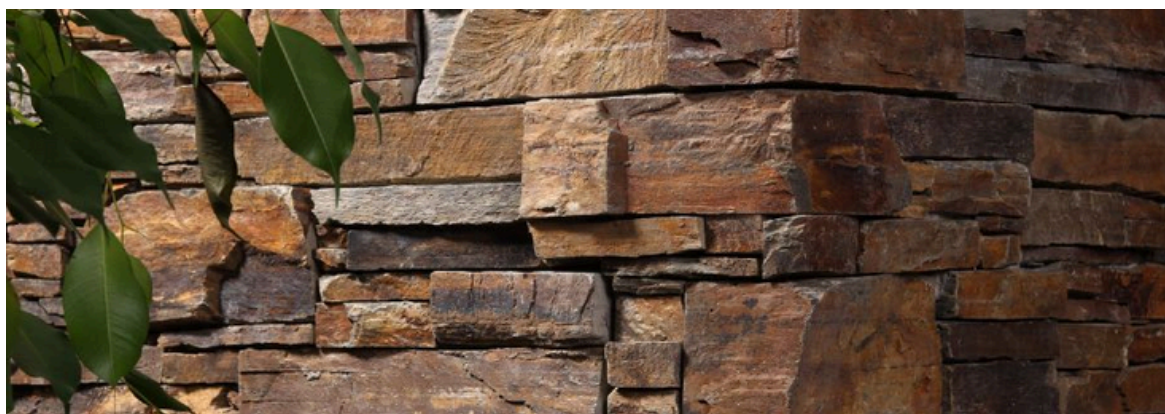


Guaranteed

Along with all the added benefits of Tier, comes peace of mind. Such is our confidence, TIER Panel System comes with a 25 year warranty.



TIER®



Natural Stone Supplies
GL SHARPE & SONS LTD
EST 1978

Visit us online at: www.natural-paving.co.uk

TIER® NOVA

PANEL SYSTEM

TIER® NOVA Range consists of two components, panels and quoins. These modular panels fit seamlessly together, eliminating the need for specialist labour and making Tier a quick and easy system to use with virtually no waste. The panels and quoins are made of natural stone, quartzite, granite, limestone, sandstone or slate. Each panel is composed of a number of individual natural stones that have been dressed by hand and adhered together with a cement back reinforced with a light metal or fibre glass mesh. This makes TIER® the perfect alternative to manufactured stone and traditional methods.

All panels and quoins are Z-shaped in order to hide the joints from view therefore creating an authentic stone wall appearance each time. TIER® Panel System can transform any room or building from a plain, uninspiring project into a stunning feature wall, providing the simple yet unique characteristic look of a traditional dry stone wall. Being made from natural stone, the characteristics, colour and beauty of our panel systems improve over time, and in all climates.

COLOUR RANGE



Multicolour



Thin Black Slate



Black Slate



Rustic Granite



Yellow Quartz



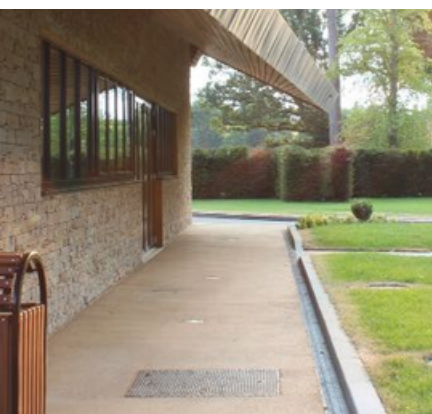
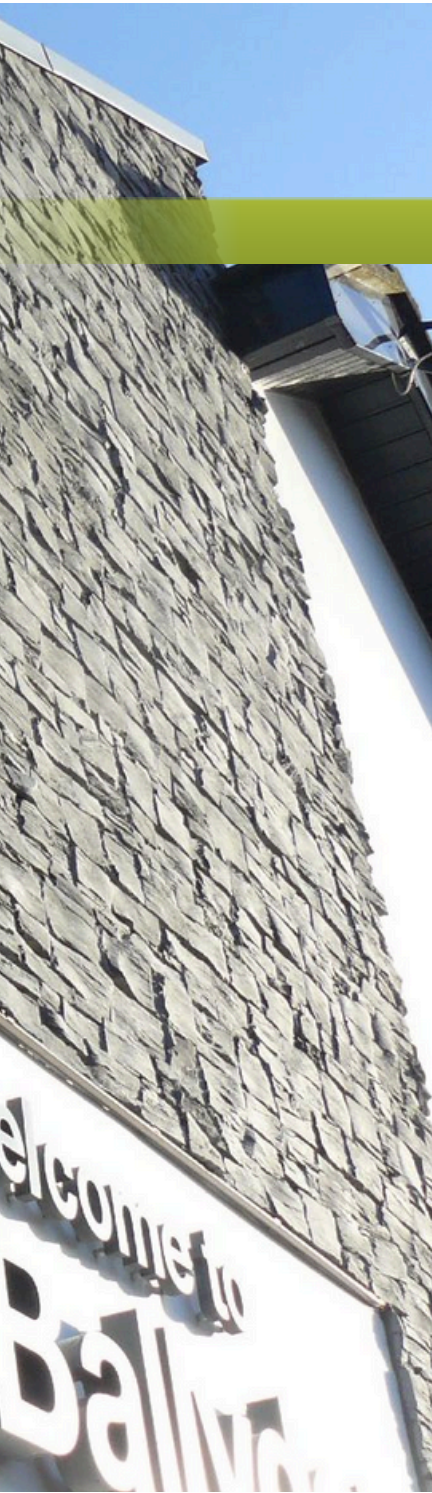
Sahara



Nordic



Irish Blend



TIER Quoin System

The TIER® Quoin System can enhance both the corner and/or window reveals of the building, giving the impression of grandeur and establishment. The distinctive beauty of a natural stone corner is achieved by using its unique 'L' shape, which fits seamlessly together with the TIER® Panel System. Depending on the style of property, there are a selection of colours to choose from.

TIER QUOIN EXAMPLES:

Black Slate



Rustic Granite



Multicolour



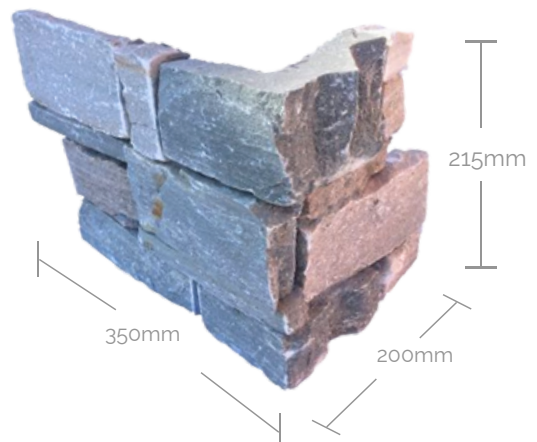
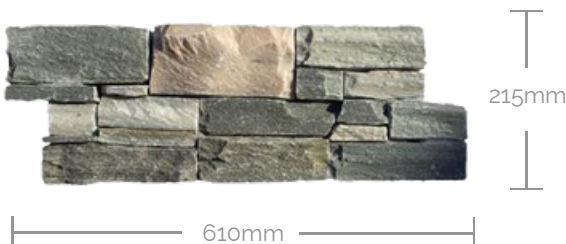
Yellow Quartz



Nordic

PANELS & QUOIN MEASUREMENTS

Panels: 610mm long x 215mm high Quoins: 350mm long x 200mm return x 215mm high



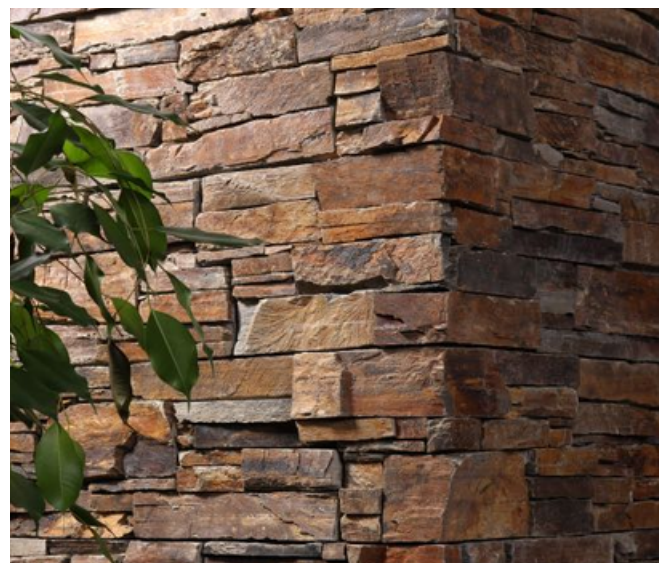
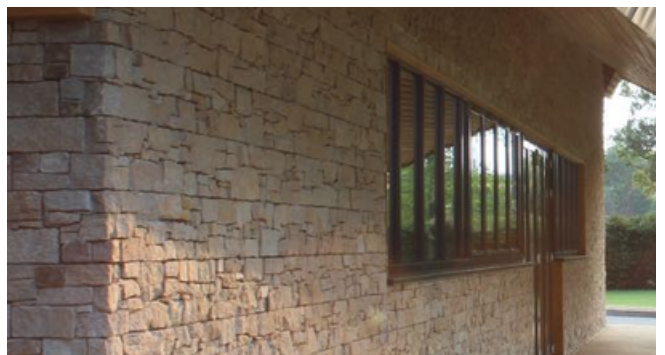
PACKAGING PANELS & QUOINS

Type	Box Qty (If Boxed)	Crate Qty	Approx. Weight
NOVA Panels	0.48m ²	10.56m ²	80-85kg / m ²
NOVA Corners	2 Pieces	52 Pieces	8.5kg / Piece

THE CORNERS

TIER QUOIN SYSTEM

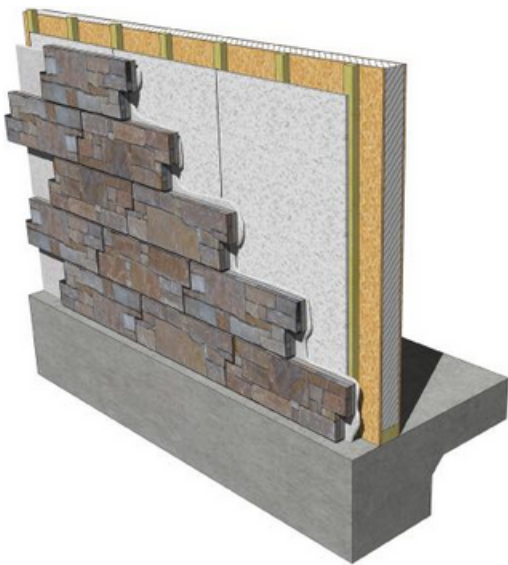
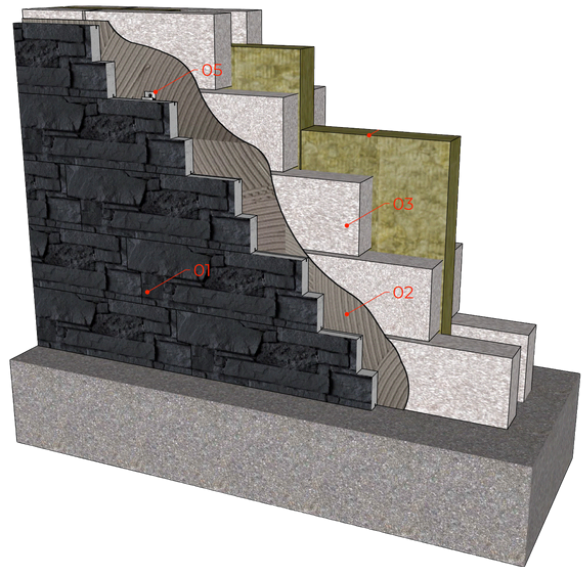
The Tier Quoin System is designed to fit seamlessly together with the panels, therefore giving a realistic appearance of a solid traditional wall.



The Quoin System is also very effective for finishing against windows or door openings.

CONCRETE & BLOCKWORK METHOD

TIER Panel System can be attached to a new or existing concrete or block work structures using our TIER Masonry Installation System.

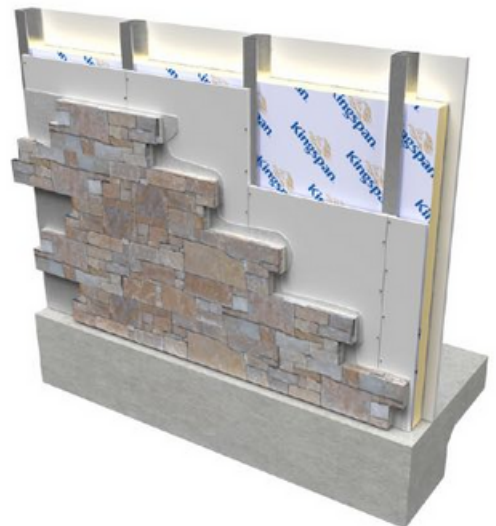


TIMBER FRAME METHOD

Tier Panel System can be fitted to our approved Building Board which is screwed to a Timber Frame Structure.

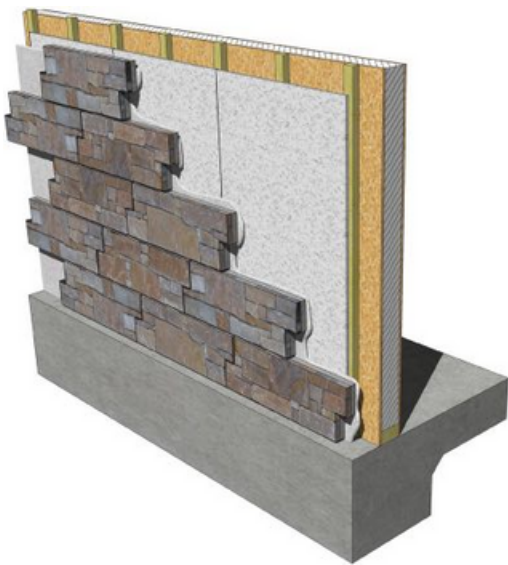
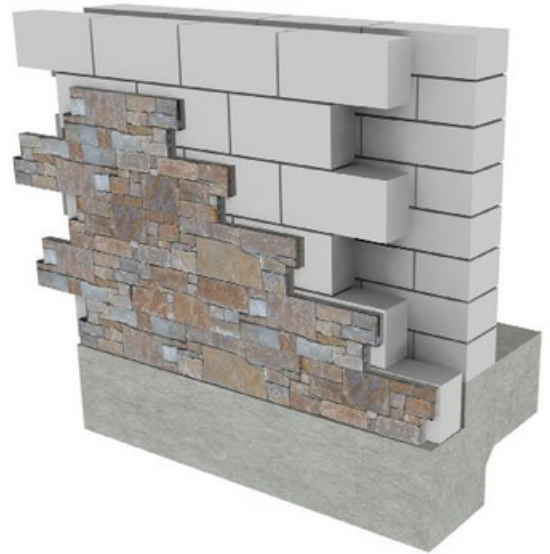
STEEL FRAME METHOD

The Steel Frame Method is similar to the Timber Frame, the only difference being the TIER Building Board is screwed to the steel uprights.



TRADITIONAL BUILD METHOD

Tier Panel System can be attached to a new or existing concrete or block work structures using our TIER Masonry Installation System.

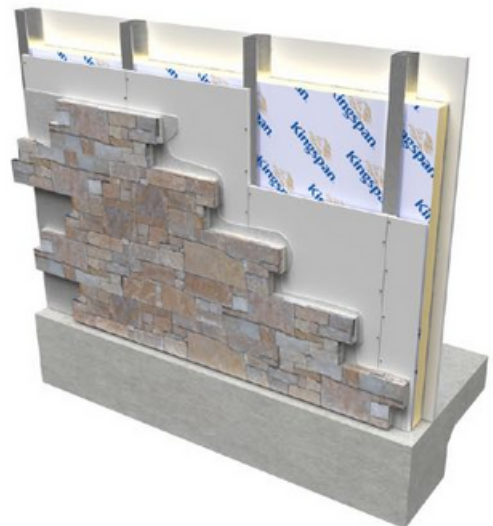


STEEL FRAME METHOD

The Steel Frame Method is similar to the Timber Frame, the only difference being the TIER Building Board is screwed to the steel uprights.

TIMBER FRAME METHOD

Tier Panel System can be fitted to our approved Building Board which is screwed to a Timber Frame Structure.



ASSOCIATED PRODUCTS

MASONRY INSTALLATION SYSTEM



XCEL PREMIUM CLADDING ADHESIVE

XCEL™ PCA is a patented, A1 Fire Rated versatile polymer fortified mortar specifically formulated for the installation of TIER® Panel, Veneer Systems and manufactured stone masonry veneers. A high performance mix provides maximum non-sag performance for vertical installations and also obtains maximum bond strength to the substrate and selected veneers. Reinforced with Kevlar® for added strength, XCE PCA offers exceptional workability and is backed by a 25 Year System Warranty.



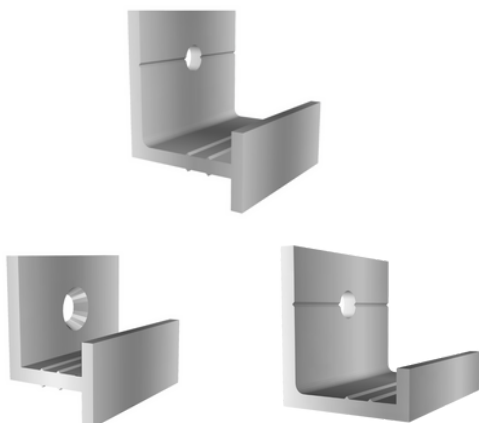
XCEL MASONRY GRAB ADHESIVE

TIER® Contemporary and XCEL™ MGA is an innovative installation method for walling projects. This new system was developed by combining TIER® Contemporary Range and Xcel's MGA high tensile strength adhesive. XCEL™ MGA Adhesive is a fast clean simple method of bonding TIER® Contemporary Panels to any approved substrate, and offers both technical and productivity advantages.



TIER® BUILDING BOARD

TIER® Building Board is a medium Density Magnesium Silicate Panel which has been developed to provide the System Build and Off-Site Construction Markets with a new fire rated external wall panel system. TIER® Building Board is tested to BS EN 594 (Racking), is A1 Non-Combustible, has a low Environmental Impact and provides a stable substrate for the TIER® Panel Systems.



TIER® KERF FIXING BRACKETS

We recommend that TIER® Kerf Fixing Brackets are used, in conjunction with Xcel A1 Fire Rated Premium Cladding Adhesive, to areas of panel fitted above 3 metres from ground level. The kerf groove design also allows for a pure mechanical fix with no adhesive for complex substrates.

Kerf Type 1 - Mechanical Bracket - Pure mechanical fix only

Kerf Type 2 - Assist Bracket - To be used with the Adhesive.

Kerf Type 3 - Lintel Bracket - At the base and around window/door heads.

INSTALLATION GUIDE

STEP BY STEP GUIDE

Preparation

Ensure all surfaces are structurally sound, between 40° F (4°C) and 90°F (32°C), and free from all dirt, oil, grease, paint and concrete sealers or curing compounds.

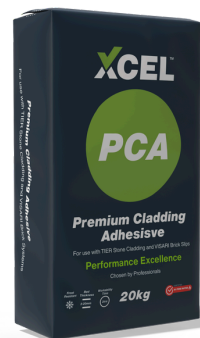
Find the level of the first row of panels by dividing the height of the surface by 215 mm (the height of each TIER® panel). Until the adhesive has fully set the first row of TIER® panel will require temporary support. A straight edge (normally a timber lath) should be fixing to the substrate to provide support and a level starting guide.

Mixing The Adhesive

When ready, mix a manageable amount of TIER® Premium Cladding Adhesive by slowly adding with clean water. The ratio of 3kgs per 1 litre of water should be used. Mix with a slow speed mixer for one minute, or until a creamy, smooth consistency has been reached. Allow to slake for 5 minutes, remix and use.

Notes:

- Only TIER® Premium Cladding Adhesive must be used with TIER® Panels.
- Only apply TIER® Premium Cladding Adhesive to an area which can be covered by TIER® Panel Systems before the adhesive surface has begun to harden or skin-over.
- TIER® Premium Cladding Adhesive should not be used at temperatures less than 5 degrees celsius.



INSTALLATION GUIDE

STEP BY STEP GUIDE

Installation

Start at the corners of the panel and spread the TIER® Premium Cladding Adhesive onto the substrate using the flat side of a notched trowel (6mm x 9mm or 12mm x 12mm size trowel). Ensure 100% coverage of the area to be cladded. Apply additional adhesive with the notched side of the trowel if required.

Apply TIER® Premium Cladding Adhesive to the back of the TIER® Panels using the same process.



It is essential that the Premium Cladding Adhesive is applied to both the substrate and the panels for maximum adherence.

Place the adhesive covered TIER® panel in the desired position and press against the adhesive covered substrate. The gentle use of a rubber mallet may be helpful. Slide the panel approximately 25mm in a diagonal direction and then back to the desired position while maintaining even pressure. No air gaps should remain between the panel and the substrate. Panels will fit tightly together side by side.



Small pieces of cement or adhesive can create gaps between panels, so ensure all panels are level and joints are thoroughly cleaned.

Cutting

If cutting is required, we recommend the use of a table saw or a 9" Grinder with the appropriate diamond blade. If a grinder is used, slight blade movement can create high torsion forces which may dislodge a stone from the backing. This is quite normal and can be stuck back using our XCEL® Masonry Grab Adhesive.

Always cut near panel joints where possible and use appropriate PPE and procedures during this process.

INSTALLATION GUIDE

STEP BY STEP GUIDE

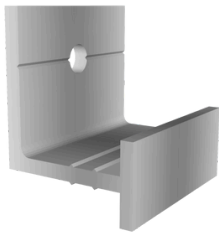
Care and Maintenance

Stone products which have been sealed may be easier to keep clean and maintain than unsealed stone. However, sealing is not recommended on TIER® Products. All panels can be clean with warm clean water and specified natural stone cleaner from any reputable local builders merchant.

Installation - Brackets

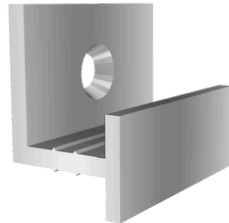
For a pure mechanical fix (without the adhesive) or for structures above 3m in height, the TIER® Brackets must be used to install the TIER® Panels.

There are 3 types of brackets:



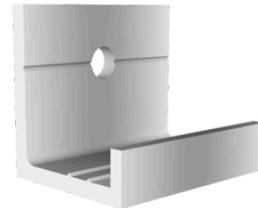
TIER® Mechanical
Bracket - Type 01

To be used for a pure
mechanical fix



TIER® Assist
Bracket - Type 02

To be used with the
adhesive above 3m
in height



TIER® Lintel
Bracket - Type 03

To be used around
window heads

All brackets are made from extruded aluminium and therefore will not rust or degrade over time.

All clips are sold in boxes of 100 however, they do not come with the fixing. The fixing must be bought separately and must be suitable for the substrate to be installed back too.

INSTALLATION GUIDE

STEP BY STEP GUIDE

Installation - Brackets

To install the bracket with the panel:

- Slide the panel into temporary position.
- Slide the restraint into the pre-made kerf groove in the panel.
- Mark on the building substrate where the hole for the fixing needs to be, taking into account the size of the panel.
- Drill the hole for the fixing ensuring to minimise any dust. Clean off any dust generated.
- Install the fixing plug using a hammer if required.
- Using the screw, restrain the bracket to the newly installed fixing plug to secure the panel into the permanent position.

Repeat the process above for subsequent panels.





Natural Stone Supplies

GL SHARPE & SONS LTD
EST 1978

Natural Stone Supplies
Station Goods Yard
Warton Road
Carnforth
Lancashire
LA5 9EU

For more information about TIER® products, please visit:

W: www.natural-paving.co.uk | T: 01524 736533 | E: sales@natural-paving.co.uk